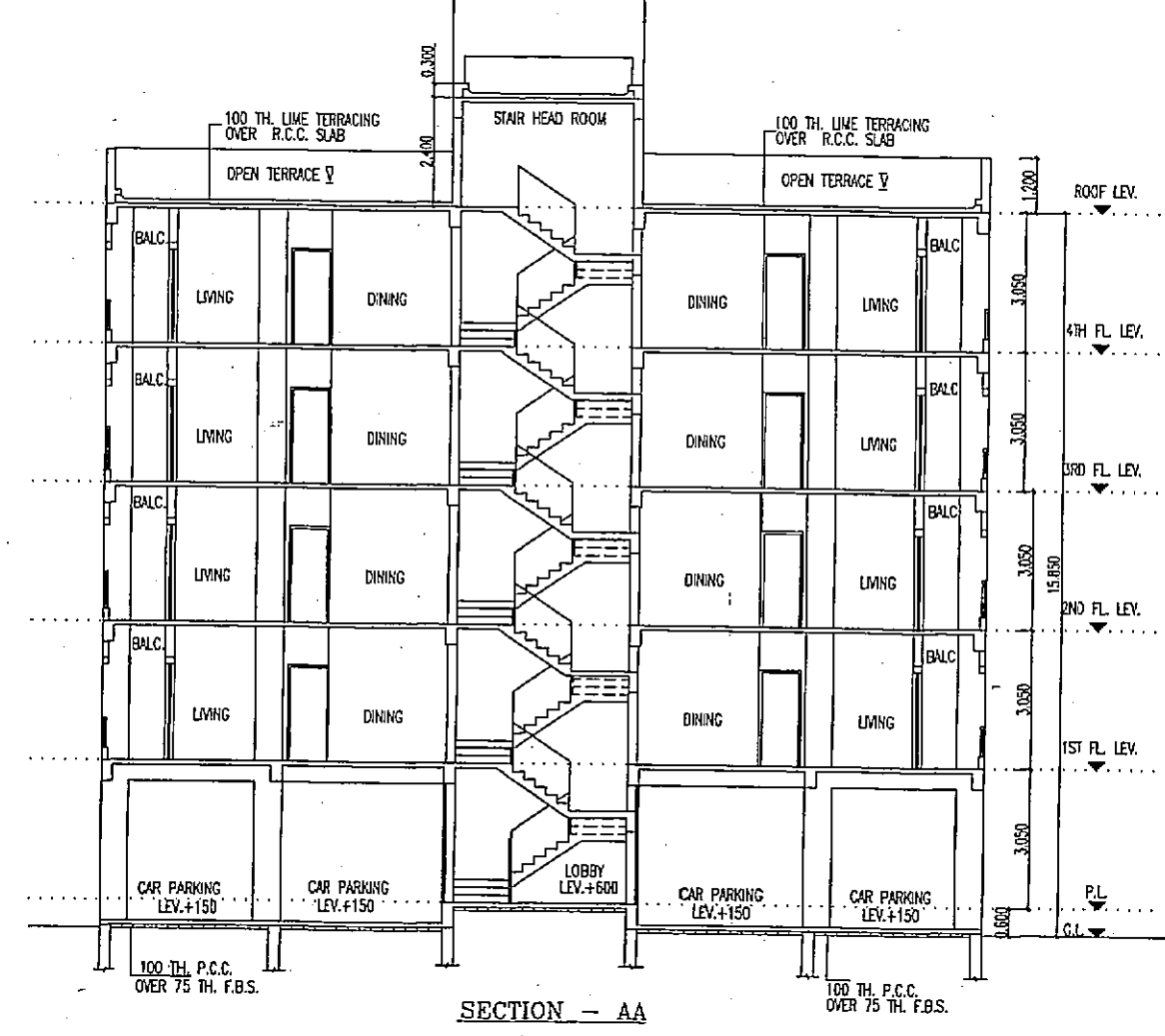
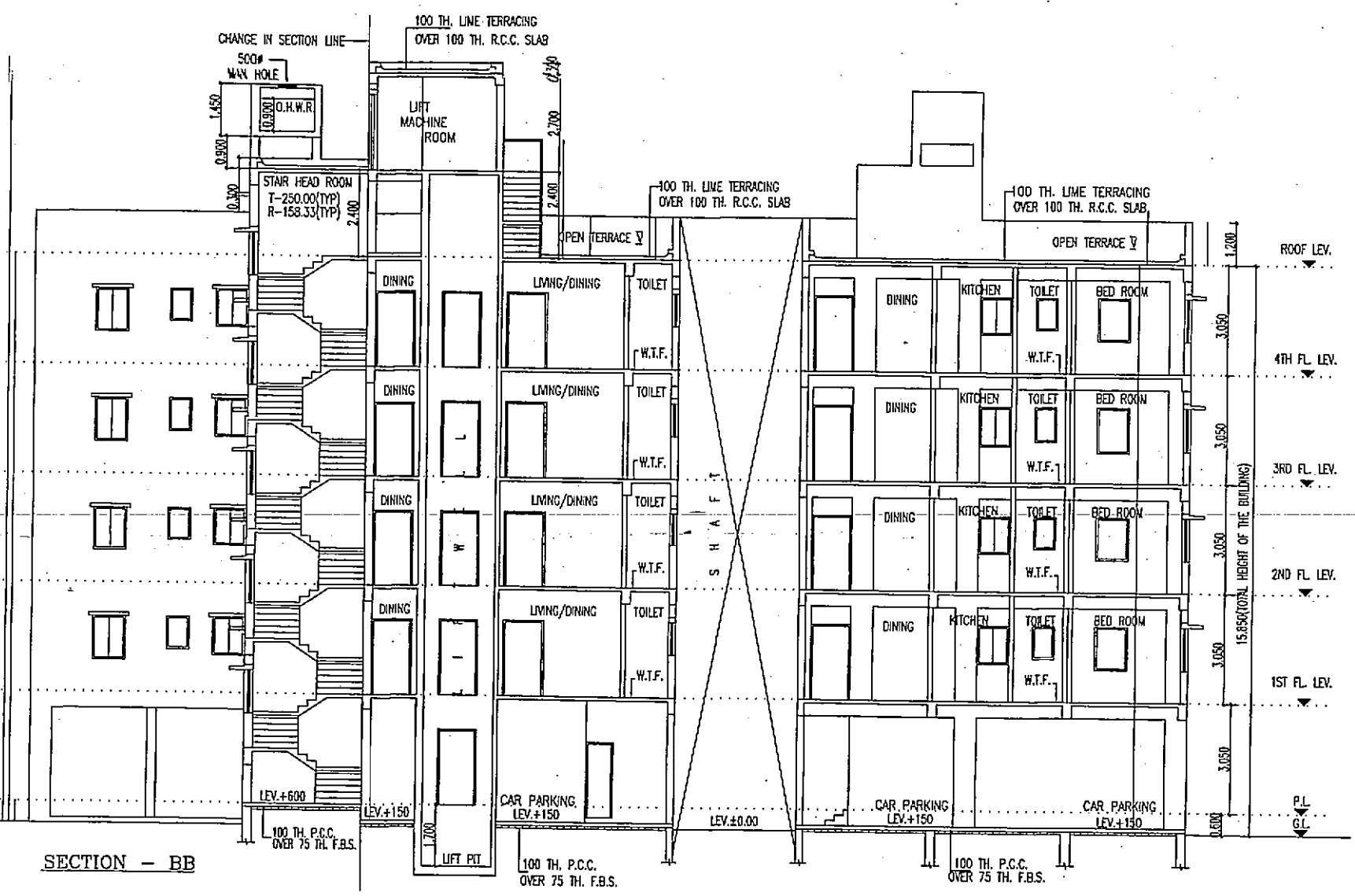




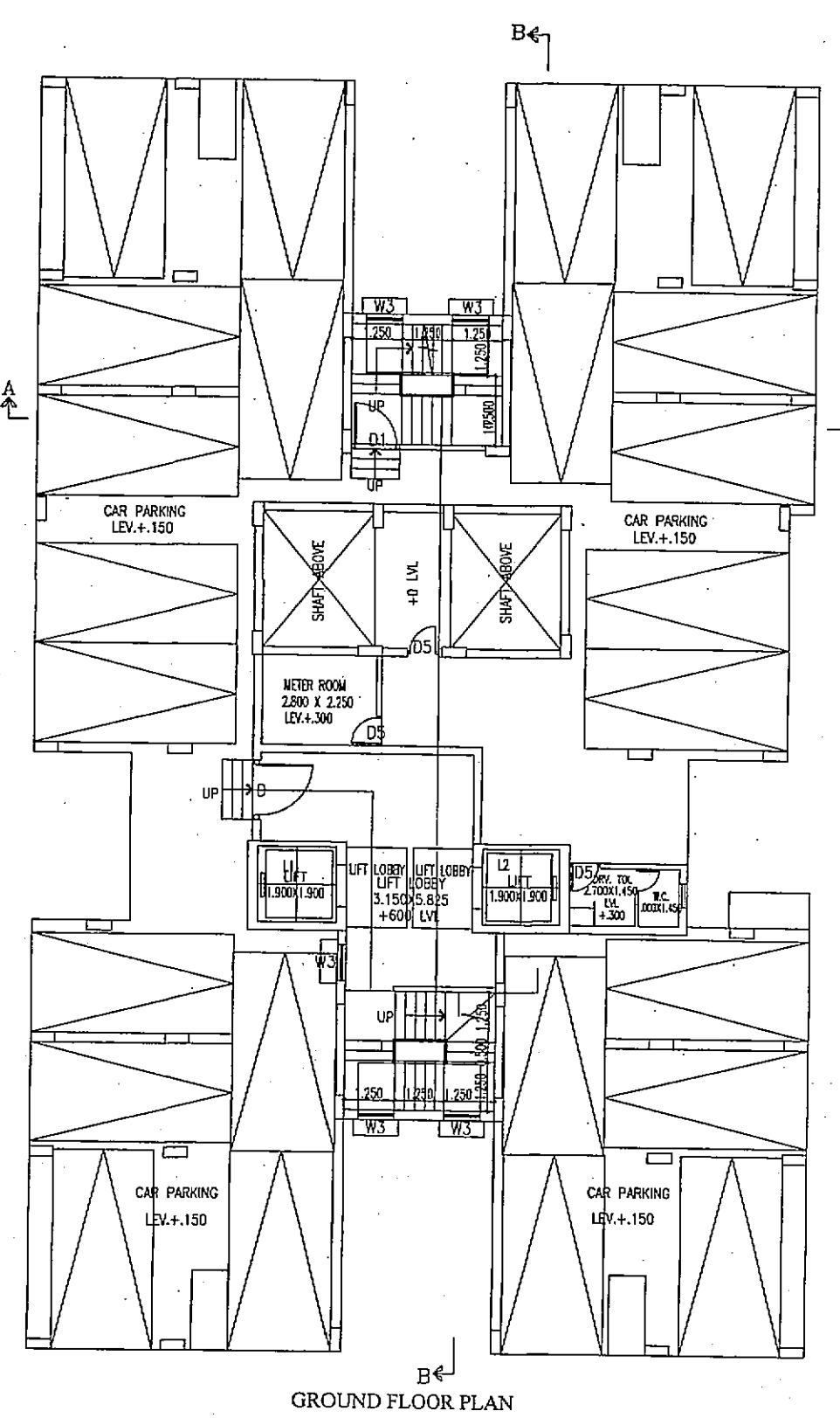
FRONT ELEVATION



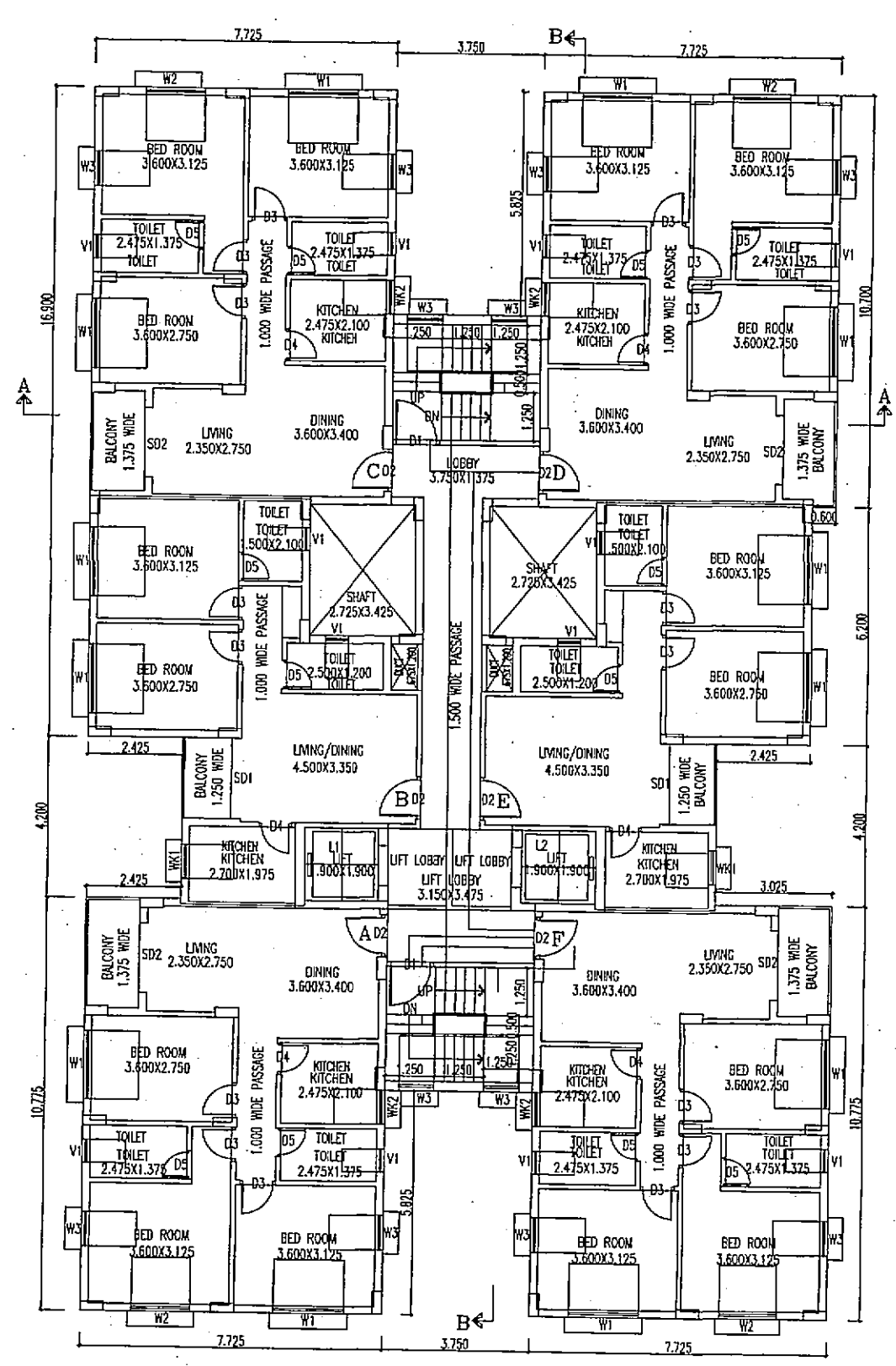
SECTION - AA



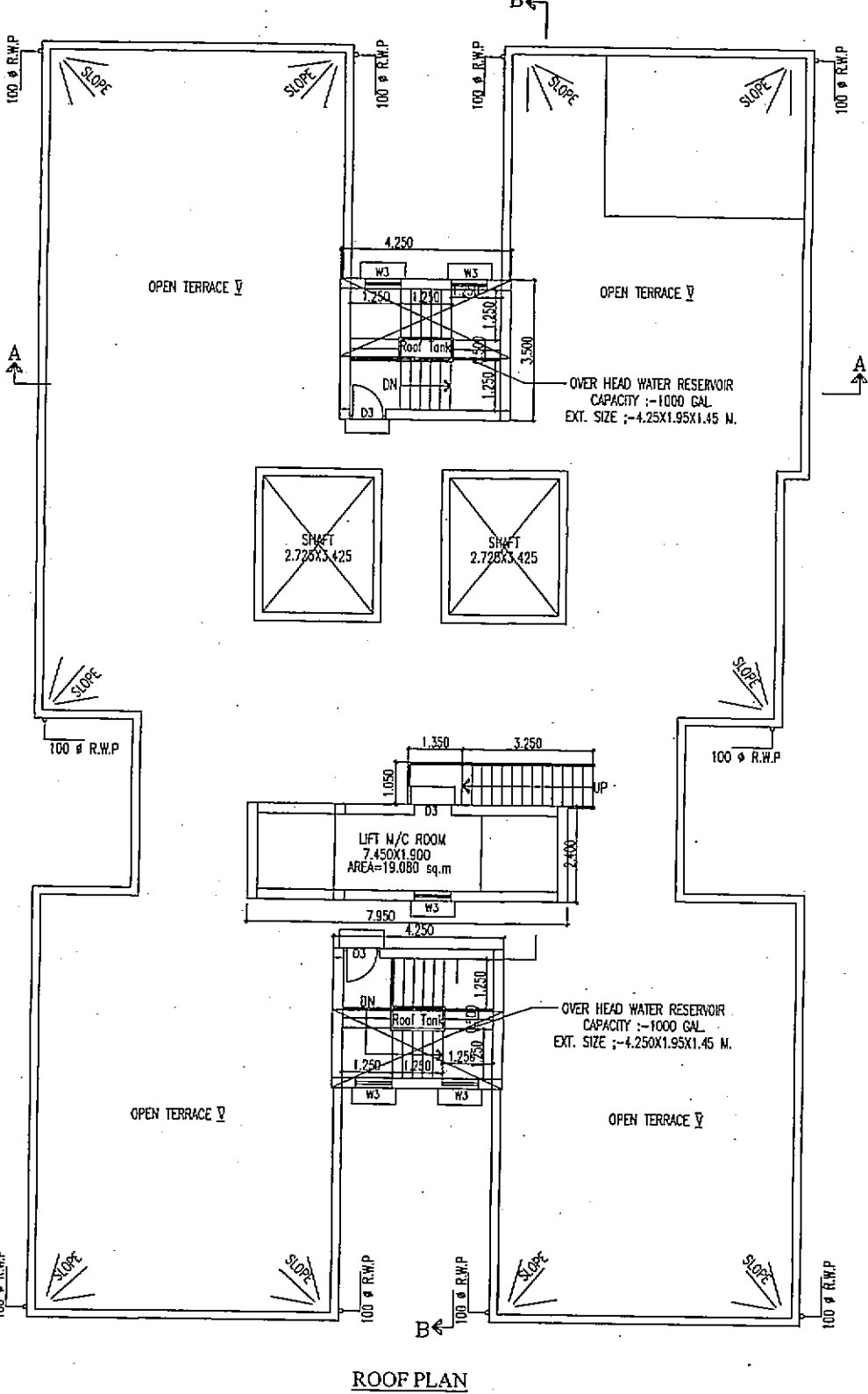
SECTION - BB



GROUND FLOOR PLAN



TYPICAL FLOOR PLAN FLOOR01, FLOOR02, FLOOR03, FLOOR04-TYPICAL



ROOF PLAN

GENERAL NOTES
 1. ALL DIMENSIONS ARE IN MM.
 2. ALL EXTERNAL WALLS 200TH & INTERNAL WALLS ARE 125 & 75 THK.
 3. ALL MASONRY WORKS ARE BOUNDED BY CEMENT MORTAR (1:6) & (1:4).
 4. EXTERNAL PLASTER IS 20TH & INTERNAL PLASTER IS 12MM TH WITH 1:4 MORTAR.
 5. ALL CONC. GRADE IS M20 (1:1.5:3).

SCHEDULE OF DOORS & WINDOWS

TYPE	SILL	HEIGHT	WIDTH	NO.	AREA	PERIMETER
D1	2100	1500	2100	1600	1600	1600
D2	2100	1500	2100	1500	1500	1500
D3	2100	1500	2100	1200	1200	1200
D4	2100	1500	2100	1000	1000	1000
D5	2100	1500	2100	800	800	800
W1	2100	1500	2100	600	600	600
W2	2100	1500	2100	400	400	400

DECLARATION OF OWNER
 CERTIFIED THAT I HAVE GONE THROUGH THE BUILDING BY LAWS FOR NORTH BARRACKPORE MUNICIPALITY AND ALSO UNDERTAKE TO ABIDE BY THOSE RULES DURING AND AFTER CONSTRUCTION OF THE BUILDING.
 CERTIFIED THAT I SHALL NOT ON A LATER DATE MAKE ANY ADDITION OR ALTERATION TO THIS PLAN DURING CONSTRUCTION. I SHALL BE FULLY RESPONSIBLE FOR ANY VIOLATION OF THE BUILDING RULES AS WELL AS THE SANCTIONED BUILDING PLAN.

DECLARATION OF ENGINEER
 CERTIFIED THAT THE FOUNDATION AND SUPER STRUCTURE OF THE BUILDING HAVE BEEN SO DESIGNED BY ME AS TO BE SAFE IN ALL RESPECT INCLUDING THE CONSIDERATION OF THE BEARING CAPACITY AND SETTLEMENT OF THE SUBSOIL ETC AS PER IS-10800/IS CODE.
 CERTIFIED THAT THE PLAN HAS BEEN SO DESIGNED AND DRAWN UP STRICTLY ACCORDING TO THE BUILDING RULES FOR NORTH BARRACKPORE MUNICIPALITY.

TITLE BLOCK-9
PROPOSED GROUND FLOOR AREA = 523.036 SQM
PROPOSED TYPICAL FLOOR AREA = 514.196 SQM
GROUND FLOOR PLAN, TYPICAL FLOOR PLAN (1ST TO 4TH FLOOR), ROOF PLAN, ELEVATION & SECTIONS
PROJECT
 ADDITION & ALTERATION PLAN FOR G+H (1585 M) STORED BUILDING, PREVIOUS G+H STORED BUILDING (145M) SANCTIONED UNDER PLAN NO.- 421 OF 2014 & 2015 RES. NO. 15 (B.O.C) ON 31.01.15 HOUSING COMPLEX OF TELEDUP BARTER (P) LTD. & OTHERS AT DAG NO.- 46, 46/997, 38/1680, 38/1681, 46/1682, 46/1683, 46/1684, 46/1685, 46/1686, 46/1687, 46/1688, 46/1689, 46/1690, 46/1691, 46/1692, 46/1693, 46/1694, 46/1695, 46/1696, 46/1697, 46/1698, 46/1699, 46/1700, 46/1701, 46/1702, 46/1703, 46/1704, 46/1705, 46/1706, 46/1707, 46/1708, 46/1709, 46/1710, 46/1711, 46/1712, 46/1713, 46/1714, 46/1715, 46/1716, 46/1717, 46/1718, 46/1719, 46/1720, 46/1721, 46/1722, 46/1723, 46/1724, 46/1725, 46/1726, 46/1727, 46/1728, 46/1729, 46/1730, 46/1731, 46/1732, 46/1733, 46/1734, 46/1735, 46/1736, 46/1737, 46/1738, 46/1739, 46/1740, 46/1741, 46/1742, 46/1743, 46/1744, 46/1745, 46/1746, 46/1747, 46/1748, 46/1749, 46/1750, 46/1751, 46/1752, 46/1753, 46/1754, 46/1755, 46/1756, 46/1757, 46/1758, 46/1759, 46/1760, 46/1761, 46/1762, 46/1763, 46/1764, 46/1765, 46/1766, 46/1767, 46/1768, 46/1769, 46/1770, 46/1771, 46/1772, 46/1773, 46/1774, 46/1775, 46/1776, 46/1777, 46/1778, 46/1779, 46/1780, 46/1781, 46/1782, 46/1783, 46/1784, 46/1785, 46/1786, 46/1787, 46/1788, 46/1789, 46/1790, 46/1791, 46/1792, 46/1793, 46/1794, 46/1795, 46/1796, 46/1797, 46/1798, 46/1799, 46/1800, 46/1801, 46/1802, 46/1803, 46/1804, 46/1805, 46/1806, 46/1807, 46/1808, 46/1809, 46/1810, 46/1811, 46/1812, 46/1813, 46/1814, 46/1815, 46/1816, 46/1817, 46/1818, 46/1819, 46/1820, 46/1821, 46/1822, 46/1823, 46/1824, 46/1825, 46/1826, 46/1827, 46/1828, 46/1829, 46/1830, 46/1831, 46/1832, 46/1833, 46/1834, 46/1835, 46/1836, 46/1837, 46/1838, 46/1839, 46/1840, 46/1841, 46/1842, 46/1843, 46/1844, 46/1845, 46/1846, 46/1847, 46/1848, 46/1849, 46/1850, 46/1851, 46/1852, 46/1853, 46/1854, 46/1855, 46/1856, 46/1857, 46/1858, 46/1859, 46/1860, 46/1861, 46/1862, 46/1863, 46/1864, 46/1865, 46/1866, 46/1867, 46/1868, 46/1869, 46/1870, 46/1871, 46/1872, 46/1873, 46/1874, 46/1875, 46/1876, 46/1877, 46/1878, 46/1879, 46/1880, 46/1881, 46/1882, 46/1883, 46/1884, 46/1885, 46/1886, 46/1887, 46/1888, 46/1889, 46/1890, 46/1891, 46/1892, 46/1893, 46/1894, 46/1895, 46/1896, 46/1897, 46/1898, 46/1899, 46/1900, 46/1901, 46/1902, 46/1903, 46/1904, 46/1905, 46/1906, 46/1907, 46/1908, 46/1909, 46/1910, 46/1911, 46/1912, 46/1913, 46/1914, 46/1915, 46/1916, 46/1917, 46/1918, 46/1919, 46/1920, 46/1921, 46/1922, 46/1923, 46/1924, 46/1925, 46/1926, 46/1927, 46/1928, 46/1929, 46/1930, 46/1931, 46/1932, 46/1933, 46/1934, 46/1935, 46/1936, 46/1937, 46/1938, 46/1939, 46/1940, 46/1941, 46/1942, 46/1943, 46/1944, 46/1945, 46/1946, 46/1947, 46/1948, 46/1949, 46/1950, 46/1951, 46/1952, 46/1953, 46/1954, 46/1955, 46/1956, 46/1957, 46/1958, 46/1959, 46/1960, 46/1961, 46/1962, 46/1963, 46/1964, 46/1965, 46/1966, 46/1967, 46/1968, 46/1969, 46/1970, 46/1971, 46/1972, 46/1973, 46/1974, 46/1975, 46/1976, 46/1977, 46/1978, 46/1979, 46/1980, 46/1981, 46/1982, 46/1983, 46/1984, 46/1985, 46/1986, 46/1987, 46/1988, 46/1989, 46/1990, 46/1991, 46/1992, 46/1993, 46/1994, 46/1995, 46/1996, 46/1997, 46/1998, 46/1999, 46/2000, 46/2001, 46/2002, 46/2003, 46/2004, 46/2005, 46/2006, 46/2007, 46/2008, 46/2009, 46/2010, 46/2011, 46/2012, 46/2013, 46/2014, 46/2015, 46/2016, 46/2017, 46/2018, 46/2019, 46/2020, 46/2021, 46/2022, 46/2023, 46/2024, 46/2025, 46/2026, 46/2027, 46/2028, 46/2029, 46/2030, 46/2031, 46/2032, 46/2033, 46/2034, 46/2035, 46/2036, 46/2037, 46/2038, 46/2039, 46/2040, 46/2041, 46/2042, 46/2043, 46/2044, 46/2045, 46/2046, 46/2047, 46/2048, 46/2049, 46/2050, 46/2051, 46/2052, 46/2053, 46/2054, 46/2055, 46/2056, 46/2057, 46/2058, 46/2059, 46/2060, 46/2061, 46/2062, 46/2063, 46/2064, 46/2065, 46/2066, 46/2067, 46/2068, 46/2069, 46/2070, 46/2071, 46/2072, 46/2073, 46/2074, 46/2075, 46/2076, 46/2077, 46/2078, 46/2079, 46/2080, 46/2081, 46/2082, 46/2083, 46/2084, 46/2085, 46/2086, 46/2087, 46/2088, 46/2089, 46/2090, 46/2091, 46/2092, 46/2093, 46/2094, 46/2095, 46/2096, 46/2097, 46/2098, 46/2099, 46/2100, 46/2101, 46/2102, 46/2103, 46/2104, 46/2105, 46/2106, 46/2107, 46/2108, 46/2109, 46/2110, 46/2111, 46/2112, 46/2113, 46/2114, 46/2115, 46/2116, 46/2117, 46/2118, 46/2119, 46/2120, 46/2121, 46/2122, 46/2123, 46/2124, 46/2125, 46/2126, 46/2127, 46/2128, 46/2129, 46/2130, 46/2131, 46/2132, 46/2133, 46/2134, 46/2135, 46/2136, 46/2137, 46/2138, 46/2139, 46/2140, 46/2141, 46/2142, 46/2143, 46/2144, 46/2145, 46/2146, 46/2147, 46/2148, 46/2149, 46/2150, 46/2151, 46/2152, 46/2153, 46/2154, 46/2155, 46/2156, 46/2157, 46/2158, 46/2159, 46/2160, 46/2161, 46/2162, 46/2163, 46/2164, 46/2165, 46/2166, 46/2167, 46/2168, 46/2169, 46/2170, 46/2171, 46/2172, 46/2173, 46/2174, 46/2175, 46/2176, 46/2177, 46/2178, 46/2179, 46/2180, 46/2181, 46/2182, 46/2183, 46/2184, 46/2185, 46/2186, 46/2187, 46/2188, 46/2189, 46/2190, 46/2191, 46/2192, 46/2193, 46/2194, 46/2195, 46/2196, 46/2197, 46/2198, 46/2199, 46/2200, 46/2201, 46/2202, 46/2203, 46/2204, 46/2205, 46/2206, 46/2207, 46/2208, 46/2209, 46/2210, 46/2211, 46/2212, 46/2213, 46/2214, 46/2215, 46/2216, 46/2217, 46/2218, 46/2219, 46/2220, 46/2221, 46/2222, 46/2223, 46/2224, 46/2225, 46/2226, 46/2227, 46/2228, 46/2229, 46/2230, 46/2231, 46/2232, 46/2233, 46/2234, 46/2235, 46/2236, 46/2237, 46/2238, 46/2239, 46/2240, 46/2241, 46/2242, 46/2243, 46/2244, 46/2245, 46/2246, 46/2247, 46/2248, 46/2249, 46/2250, 46/2251, 46/2252, 46/2253, 46/2254, 46/2255, 46/2256, 46/2257, 46/2258, 46/2259, 46/2260, 46/2261, 46/2262, 46/2263, 46/2264, 46/2265, 46/2266, 46/2267, 46/2268, 46/2269, 46/2270, 46/2271, 46/2272, 46/2273, 46/2274, 46/2275, 46/2276, 46/2277, 46/2278, 46/2279, 46/2280, 46/2281, 46/2282, 46/2283, 46/2284, 46/2285, 46/2286, 46/2287, 46/2288, 46/2289, 46/2290, 46/2291, 46/2292, 46/2293, 46/2294, 46/2295, 46/2296, 46/2297, 46/2298, 46/2299, 46/2300, 46/2301, 46/2302, 46/2303, 46/2304, 46/2305, 46/2306, 46/2307, 46/2308, 46/2309, 46/2310, 46/2311, 46/2312, 46/2313, 46/2314, 46/2315, 46/2316, 46/2317, 46/2318, 46/2319, 46/2320, 46/2321, 46/2322, 46/2323, 46/2324, 46/2325, 46/2326, 46/2327, 46/2328, 46/2329, 46/2330, 46/2331, 46/2332, 46/2333, 46/2334, 46/2335, 46/2336, 46/2337, 46/2338, 46/2339, 46/2340, 46/2341, 46/2342, 46/2343, 46/2344, 46/2345, 46/2346, 46/2347, 46/2348, 46/2349, 46/2350, 46/2351, 46/2352, 46/2353, 46/2354, 46/2355, 46/2356, 46/2357, 46/2358, 46/2359, 46/2360, 46/2361, 46/2362, 46/2363, 46/2364, 46/2365, 46/2366, 46/2367, 46/2368, 46/2369, 46/2370, 46/2371, 46/2372, 46/2373, 46/2374, 46/2375, 46/2376, 46/2377, 46/2378, 46/2379, 46/2380, 46/2381, 46/2382, 46/2383, 46/2384, 46/2385, 46/2386, 46/2387, 46/2388, 46/2389, 46/2390, 46/2391, 46/2392, 46/2393, 46/2394, 46/2395, 46/2396, 46/2397, 46/2398, 46/2399, 46/2400, 46/2401, 46/2402, 46/2403, 46/2404, 46/2405, 46/2406, 46/2407, 46/2408, 46/2409, 46/2410, 46/2411, 46/2412, 46/2413, 46/2414, 46/2415, 46/2416, 46/2417, 46/2418, 46/2419, 46/2420, 46/2421, 46/2422, 46/2423, 46/2424, 46/2425, 46/2426, 46/2427, 46/2428, 46/2429, 46/2430, 46/2431, 46/2432, 46/2433, 46/2434, 46/2435, 46/2436, 46/2437, 46/2438, 46/2439, 46/2440, 46/2441, 46/2442, 46/2443, 46/2444, 46/2445, 46/2446, 46/2447, 46/2448, 46/2449, 46/2450, 46/2451, 46/2452, 46/2453, 46/2454, 46/2455, 46/2456, 46/2457, 46/2458, 46/2459, 46/2460, 46/2461, 46/2462, 46/2463, 46/2464, 46/2465, 46/2466, 46/2467, 46/2468, 46/2469, 46/2470, 46/2471, 46/2472, 46/2473, 46/2474, 46/2475, 46/2476, 46/2477, 46/2478, 46/2479, 46/2480, 46/2481, 46/2482, 46/2483, 46/2484, 46/2485, 46/2486, 46/2487, 46/2488, 46/2489, 46/2490, 46/2491, 46/2492, 46/2493, 46/2494, 46/2495, 46/2496, 46/2497, 46/2498, 46/2499, 46/2500, 46/2501, 46/2502, 46/2503, 46/2504, 46/2505, 46/2506, 46/2507, 46/2508, 46/2509, 46/2510, 46/2511, 46/2512, 46/2513, 46/2514, 46/2515, 46/2516, 46/2517, 46/2518, 46/2519, 46/2520, 46/2521, 46/2522, 46/2523, 46/2524, 46/2525, 46/2526, 46/2527, 46/2528, 46/2529, 46/2530, 46/2531, 46/2532, 46/2533, 46/2534, 46/2535, 46/2536, 46/2537, 46/2538, 46/2539, 46/2540, 46/2541, 46/2542, 46/2543, 46/2544, 46/2545, 46/2546, 46/2547, 46/2548, 46/2549, 46/2550, 46/2551, 46/2552, 46/2553, 46/2554, 46/2555, 46/2556, 46/2557, 46/2558, 46/2559, 46/2560, 46/2561, 46/2562, 46/2563, 46/2564, 46/2565, 46/2566, 46/2567, 46/2568, 46/2569, 46/2570, 46/2571, 46/2572, 46/2573, 46/2574, 46/2575, 46/2576, 46/2577, 46/2578, 46/2579, 46/2580, 46/2581, 46/2582, 46/2583, 46/2584, 46/2585, 46/2586, 46/2587, 46/2588, 46/2589, 46/2590, 46/2591, 46/2592, 46/2593, 46/2594, 46/2595, 46/2596, 46/2597, 46/2598, 46/2599, 46/2600, 46/2601, 46/2602, 46/2603, 46/2604, 46/2605, 46/2606, 46/2607, 46/2608, 46/2609, 46/2610, 46/2611, 46/2612, 46/2613, 46/2614, 46/2615, 46/2616, 46/2617, 46/2618, 46/2619, 46/2620, 46/2621, 46/2622, 46/2623, 46/2624, 46/2625, 46/2626, 46/2627, 46/2628, 46/2629, 46/2630, 46/2631, 46/2632, 46/2633, 46/2634, 46/2635, 46/2636, 46/2637, 46/2638, 46/2639, 46/2640, 46/2641, 46/2642, 46/2643, 46/2644, 46/2645, 46/2646, 46/2647, 46/2648, 46/2649, 46/2650, 46/2651, 46/2652, 46/2653, 46/2654, 46/2655, 46/2656, 46/2657, 46/2658, 46/2659, 46/2660, 46/2661, 46/2662, 46/2663, 46/2664, 46/2665, 46/2666, 46/2667, 46/2668, 46/2669, 46/2670, 46/2671, 46/2672, 46/2673, 46/2674, 46/2675, 46/2676, 46/2677, 46/2678, 46/2679, 46/2680, 46/2681, 46/2682, 46/2683, 46/2684, 46/2685, 46/2686, 46/2687, 46/2688, 46/2689, 46/2690, 46/2691, 46/2692, 46/2693, 46/2694, 46/2695, 46/2696, 46/2697, 46/2698, 46/2699, 46/2700, 46/2701, 46/2702, 46/2703, 46/2704, 46/2705, 46/2706, 46/2707, 46/2708, 46/2709, 46/2710, 46/2711, 46/2712, 46/2713, 46/2714, 46/2715, 46/2716, 46/2717, 46/2718, 46/2719, 46/2720, 46/2721, 46/2722, 46/2723, 46/2724, 46/2725, 46/2726, 46/2727, 46/2728, 46/2729, 46/2730, 46/2731, 46/2732, 46/2733, 46/2734, 46/2735, 46/2736, 46/2737, 46/2738, 46/2739, 46/2740, 46/2741, 46/2742, 46/2743, 46/2744, 46/2745, 46/2746, 46/2747, 46/2748, 46/2749, 46/2750, 46/2751, 46/2752, 46/2753, 46/2754, 46/2755, 46/2756, 46/2757, 46/2758, 46/2759, 46/2760, 46/2761, 46/2762, 46/2763, 46/2764, 46/2765, 46/2766, 46/2767, 46/2768, 46/2769, 46/2770, 46/2771, 46/2772, 46/2773, 46/2774, 46/2775, 46/2776, 46/2777, 46/2778, 46/2779, 46/2780, 46/2781, 46/2782, 46/2783, 46/2784, 46/2785, 46/2786, 46/2787, 46/2788, 46/2789, 46/2790, 46/2791, 46/2792, 46/2793, 46/2794, 46/2795, 46/2796, 46/2797, 46/2798, 46/2799, 46/2800, 46/2801, 46/2802, 46/2803, 46/2804, 46/2805, 46/2806, 46/2807, 46/2808, 46/2809, 46/2810, 46/2811, 46/2812, 46/2813, 46/2814, 46/2815, 46/2816, 46/2817, 46/2818, 46/2819, 46/2820, 46/2821, 46/2822, 46/2823, 46/2824, 46/2825, 46/2826, 46/2827, 46/2828, 46/2829, 46/2830, 46/2831, 46/2832, 46/2833, 46/2834, 46/2835, 46/2836, 46/2837, 46/2838, 46/2839, 46/2840, 46/2841, 46/2842, 46/2843, 46/2844, 4